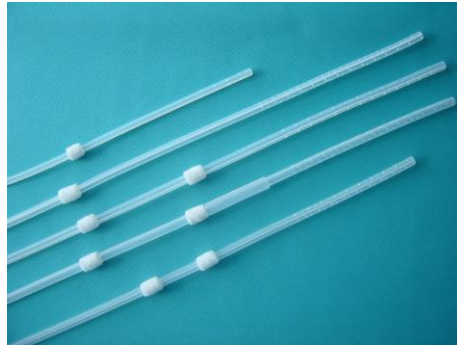
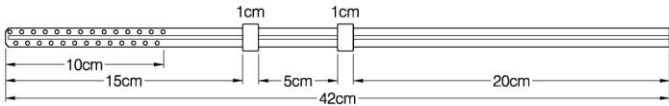


Tenckhoff PD Catheters

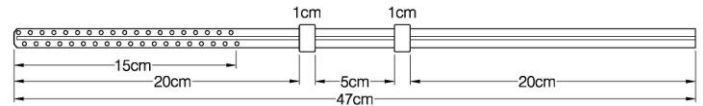
Adult, Pediatric & Neonatal



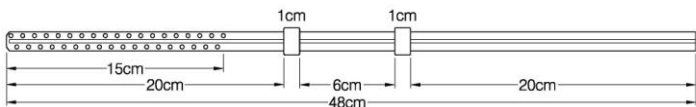
Adult



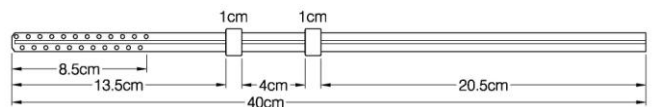
SA 1242



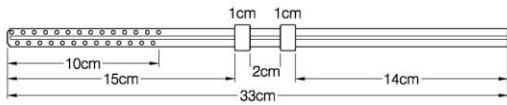
SA 1247



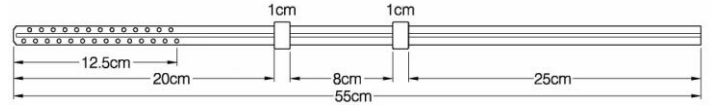
SA 1248K



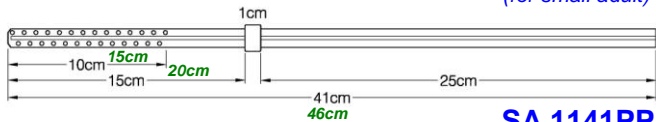
SA 1240J4



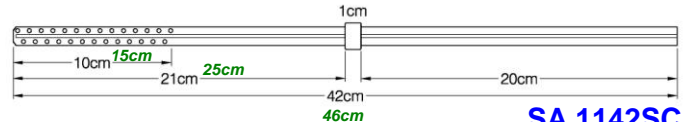
SA 1233
(for small adult)



SA 1255

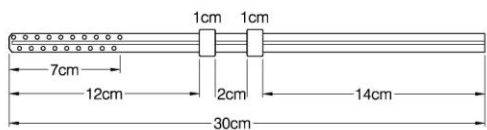


SA 1141PP
(SA 1146PP)

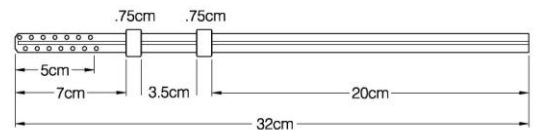


SA 1142SC
(SA 1146SC)

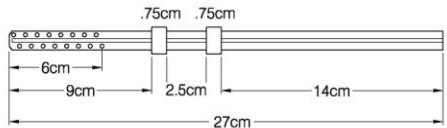
Pediatric



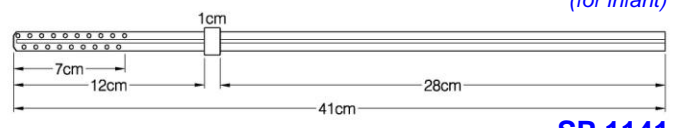
SP 1230



SP 1232
(for infant)

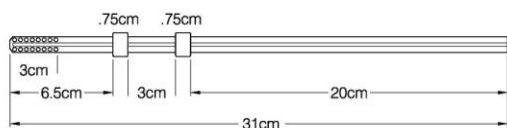


SP 1227
(for toddler)

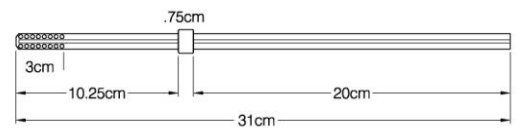


SP 1141

Neonatal *(12 French)*



SI 1231



SI 1131

